



Irvine-Laguna Wildlife Corridor

Connecting Habitats
from Mountains to Coast

THIS NEWSLETTER'S FEATURED ARTICLES:

- THE 30 X 30
INITIATIVE
- BOOK RECS
FROM OUR
BOARD

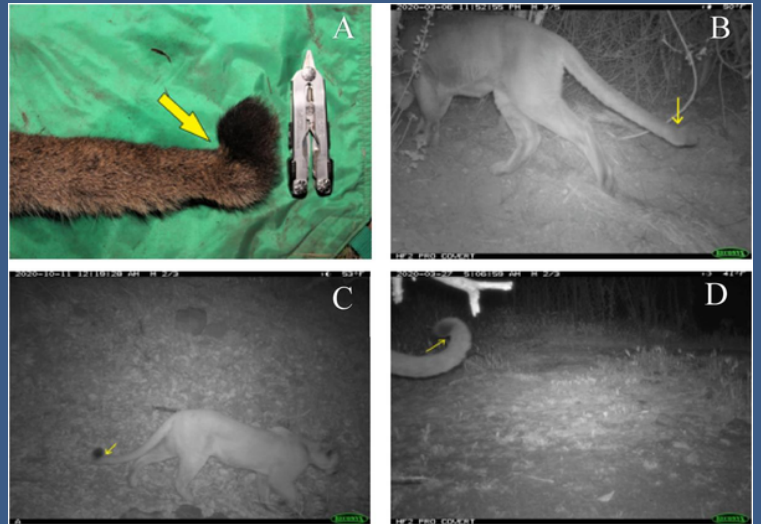
30 X 30 : HOW THE WILDLIFE CORRIDOR CAN PARTICIPATE

By Giovanni Di Franco



The state of California is at the forefront of climate policy in the United States. To address climate issues, California adopted the 30x30 initiative. This program is designed to preserve 30% of land and coastal waters by 2030 and has been adopted by over 100 countries, including the United States. The goals are to protect biodiversity, improve equitable access to nature for all, and combat climate change. While approximately 24% of California's lands and 16% of coastal waters are protected, there are many additional areas not currently considered part of the program because they are fragmented, decreasing their functionality for plants and wildlife.

Wildlife corridors act as “land bridges” that connect green spaces for wildlife to move between habitat areas. When animal populations are cut off from the ability to travel and become isolated, inbreeding can affect species’ fitness. Scientists refer to these effects as inbreeding depression. Without the ability to breed with genetically diverse mates, related individuals reproduce and have offspring that may express genetic mutations such as the “kinked tail” seen in mountain lions in the Santa Monica Mountains region. As temperatures are increasing due to climate change, we are looking for ways to encourage resilience in our communities. In this new reality, some animals and plants may need to travel and shift into new habitats. We can support these natural processes with our development practices, policies, and individual actions. There must be protected lands that contain habitable ecosystems to ensure the survival of native species. We are fortunate that the South Coast Wilderness/Greenbelt and surrounding lands are being considered a priority project by the 30 x 30 initiative for “climate resilience” in Orange County.



Huffmeyer, Audra A., et al. "First reproductive signs of inbreeding depression in Southern California male mountain lions (*Puma concolor*).*" Theriogenology 177 (2022): 157-164.*

(Continue reading on our blog at <https://wildlifecorridor.org/blog-2/>)



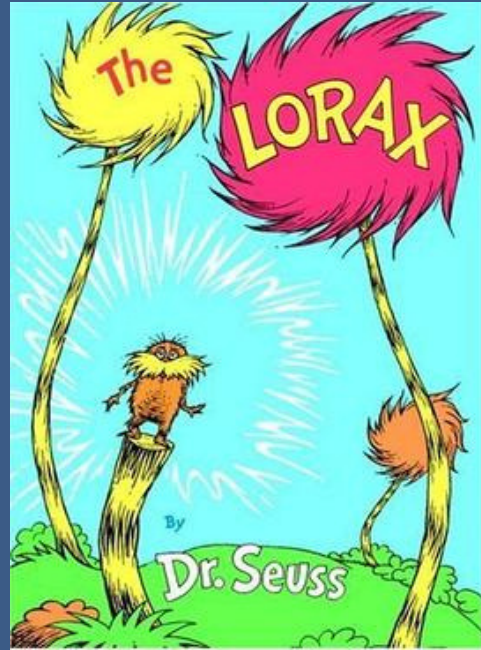
BOOK RECOMMENDATIONS FROM OUR BOARD

DR. SEUSS'S THE LORAX

"The Lorax is a children's book written by Dr. Seuss and published in 1971. It chronicles the plight of the environment ...the Lorax, the titular character, who "speaks for the trees" ..."

I've always loved that book. My children did too and I plan to read it to my grandchildren.

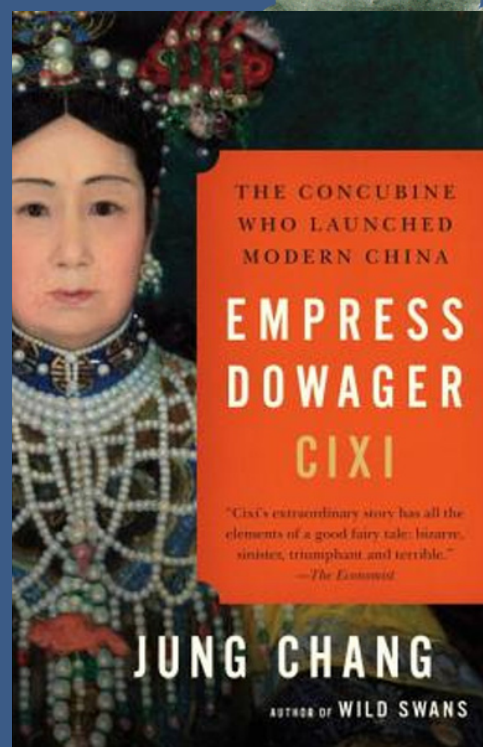
- Francine Scinto



EMPRESS DOWAGER CIXI BY JUNG CHANG

This is a fascinating and informative biography of a person most people know nothing about. She was the most influential and far-sighted "informal" leader of China for the last half of the nineteenth century leading into the first decade of the twentieth. Her impact affected not only China but much of the world.

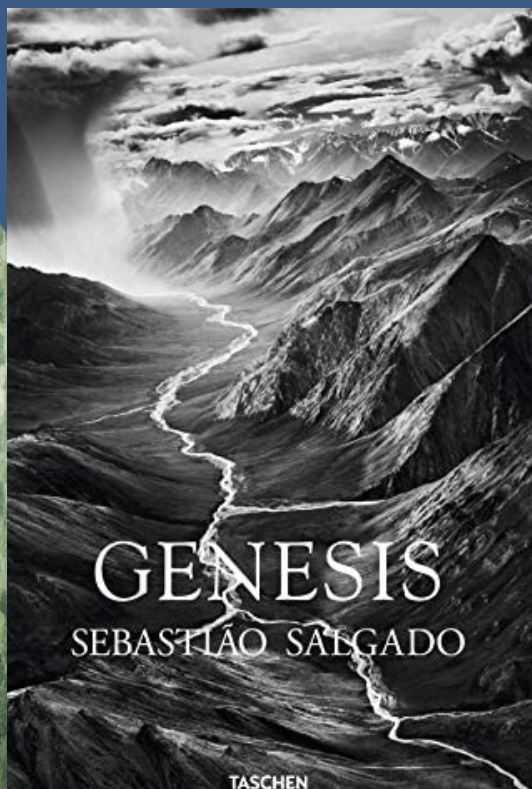
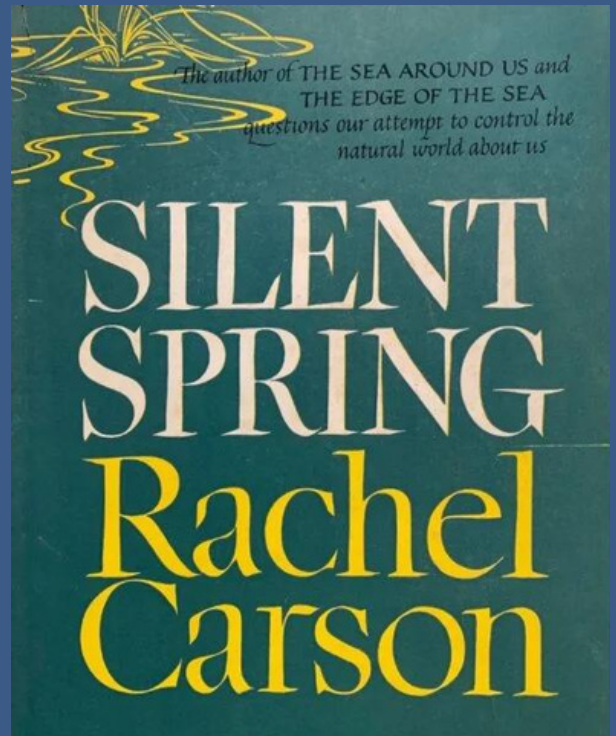
- Michael Pinto



RACHAEL CARSON'S SILENT SPRING

My interest was piqued in college when, as a double major in English and biology, I took an Ecology class in 1965. Its lab was held at 8:00 on Saturday mornings; if we missed a lab, we were assigned a book to read and report on. I was assigned Rachael Carson's *Silent Spring*--a National Book Award nominee. *I was forever changed and henceforth committed to contemplating the environments through which I moved and continue to move.*

- Kate Clark



SEBASTIÃO SALGADO'S GENESIS

I am influenced by personal experience everywhere in the Greenbelt but if there is one person who stands out for me, it would be the Brazilian photographer, Sebastião Salgado, whose book *Genesis* and its 517 pages of black and white photographs in *GENESIS* show “nature at its best” wherever he found it.

- Ron Chilcote



Irvine-Laguna Wildlife Corridor

Connecting Habitats
from Mountains to Coast

THANK YOU FOR YOUR CONTINUED SUPPORT!

Laguna Greenbelt, Inc. works to preserve open space and support wildlife that depends on local habitats to thrive.

Donate at:

<https://lagunagreenbelt.org/donate-membership/>

or mail a check to

Laguna Greenbelt, Inc.

P.O. Box 860, Laguna Beach, CA 92652

