



IRVINE-LAGUNA WILDLIFE CORRIDOR

Connecting Habitats from Mountains to Coast

A PROJECT OF LAGUNA GREENBELT, INC.

THIS NEWSLETTER'S FEATURED ARTICLES:

Earth Day Blog - 1

It's Spring: How to Take
Advantage of The Season -3

Earth Day Event: An Overview
of Our Camera Study - 4



THIS EARTH DAY, HOPE IS ALIVE AND WELL

By Gabriela Worrel, Director of Media, Laguna Greenbelt, Inc.

In honor of Earth Day this month, Laguna Greenbelt, Inc. would like to acknowledge the incredible challenges that lay ahead of humanity in living in harmony with our neighbors - not just our human neighbors, but all the wild animals, plants, and other lifeforms of Earth. It's no secret that we have significant work to do in undoing much of the harmful development and cultural practices of the past few centuries, and once again finding ways to enhance the world, as many of the world's indigenous people continue to prove is possible.

Change, especially on a large human scale, is always a tall order, but if our history has shown anything, it's that change is not only possible, but in fact, likely.

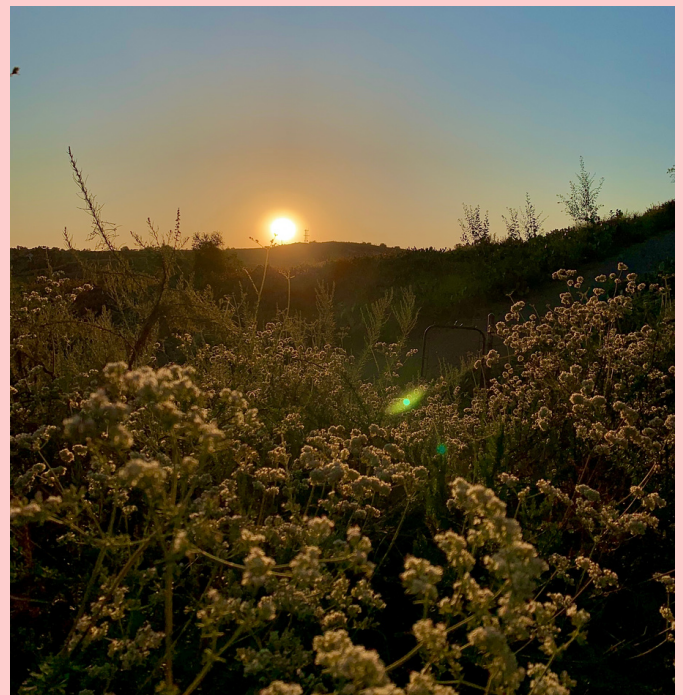
One of the bright spots in our environmental movements has been the shift in the past two decades to increased viability of and investments in wildlife corridors in the United States and globally. On a state level, every year brings increased awareness and funding for projects for California wildlife connectivity projects - projects that connect landscapes across urban developments so that animals and plants can move between large ecosystems. In our state, this is surely demonstrated by new laws and policies that allow the California Department of Fish and Wildlife and Caltrans to track essential connectivity projects and expand mitigation credits for the implementation of such projects.

At a Federal level, the Bipartisan Infrastructure Investment and Jobs Act, signed by President Biden in November 2021, provides a great deal of money for climate resiliency, which is already a boon to the environment.

And, it provides \$350 million wildlife-crossing pilot program and \$2 billion to improve fish

passage via a host of programs in the Interior, Transportation, Agriculture, and Commerce departments. Now, states across the country have responded by creating programs that can capture these funds, where the money can make their way to local landscapes.

Currently, at least 15 states, including California, have enacted or introduced legislation for terrestrial or aquatic connectivity, or declared an executive order that addresses wildlife migration. And, as always, tribal entities, nonprofits, and private citizens continue to do the largely unsung work of protecting and managing land so that all creatures will flourish.



This year, and every year, we remember that what we do today matters, and impacts our collective future. We are blessed to see some movement in the right direction for wildlife corridors. We give thanks to all our neighbors who join in the work of bringing about a world of coexistence among our biotic community, and invite you to join us in continuing this sacred tradition.

SPRING TIME

During this time of year, take advantage of the wonderful rainy season that we had these past couple of months. Our state flower, the California Poppy (*Eschscholzia californica*), and native flowers like lupine and phacelia are speckling hillsides with intense color.

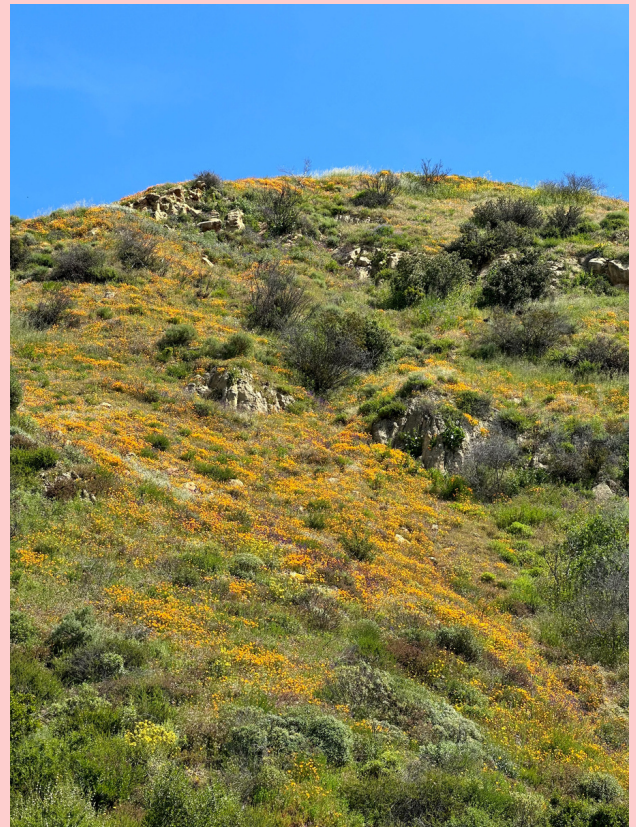
We are fortunate that Orange County has an extensive park system with trails of varying difficulty that allow all individuals, visiting and local, to enjoy nature and take advantage of the surrounding views.

Visit OCParks.com to access maps of our trails, information about park statuses, and register for upcoming events such as guided tours or plant identification classes!

**Interested in
more of our blog
content?**

Visit our page at
[wildlifecorridor.org
/blog-2/](http://wildlifecorridor.org/blog-2/)

**GARDENING, HIKING,
OUTDOOR EDUCATION**



Gardening is another activity to take advantage of this season. Simple pruning to upkeep plant health or major landscape transformations are great activities to engage in on sunny days. For example, take the opportunity to transform a portion of a grass lawn into a more draught-tolerant flower bed. Native plants are of preference, but if you don't enjoy the drought-deciduous nature of some of our native species like California Sagebrush (*Artemisia californica*) or Bush Sunflower (*Encelia californica*), choose low-maintenance Mediterranean plants like rosemary, lavender, and salvia.



Before



After

THIS EARTH DAY: APRIL 22ND, 2023

COFFEE & CONVERSATIONS

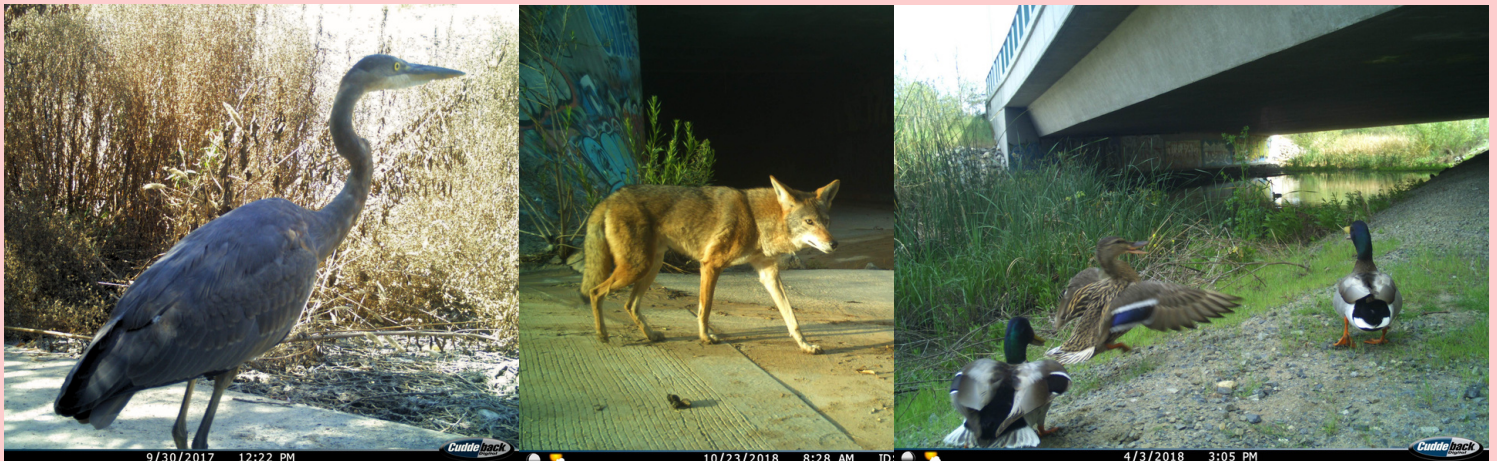
9:00 AM - 12 PM

CHARITABLE VENTURES

1505 17TH STREET SUITE 101

SANTA ANA, CA 92705

Laguna Greenbelt, Inc Board Member, John Foley, will highlight animal activity captured in the Irvine-Laguna Wildlife Corridor during our camera study.



Follow this link to reserve your spot!

<https://www.eventbrite.com/e/earth-day-2023-coffee-conservation-cc-tickets-557545121467>



THANK YOU FOR YOUR CONTINUED SUPPORT!

Laguna Greenbelt, Inc. works to preserve open space and support wildlife that depends on local habitats to thrive.

Donate at:

<https://lagunagreenbelt.org/donate-membership/>

or mail a check to

Laguna Greenbelt, Inc.

P.O. Box 860, Laguna Beach, CA 92652



Irvine-Laguna
Wildlife Corridor

Connecting Habitats
from Mountains to Coast