



IRVINE-LAGUNA WILDLIFE CORRIDOR

Connecting Habitats from Mountains to Coast

A PROJECT OF LAGUNA GREENBELT, INC.

THIS NEWSLETTER'S FEATURED ARTICLES:

MLK's Impact - 1

LGB Merch - 3

Local Events - 4



ACKNOWLEDGING INJUSTICE

By Giovanni Di Franco

With the new year, many individuals promote change in their lives. We fight to overcome old habits and attempt to establish new ones to meet personal goals. Many find that change can be difficult to achieve, but we can look back to history to remind us of the many strong figures who have pioneered change for a better world.

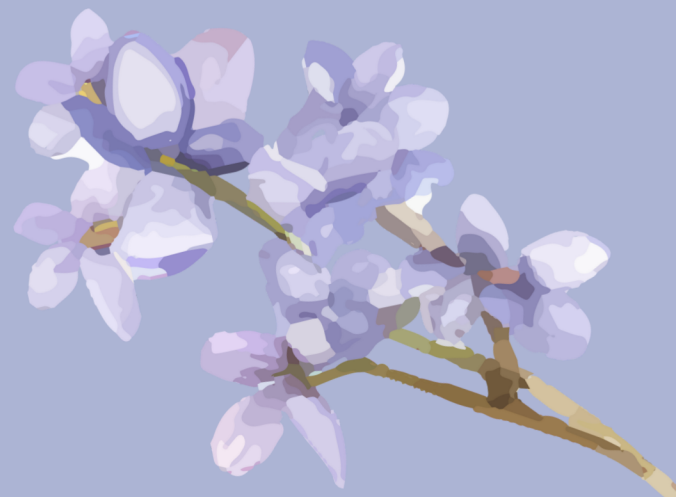
In January, we commemorate the life and teachings of Dr. Martin Luther King Jr., a prominent leader of the civil rights movement, taught the need for radical change in our society.



While primarily focused on the issues of race and the pervasive issues of discrimination, Dr. King fought for the rights of all individuals impacted by systemic issues of inequality.

Decades later, we have witnessed the growing issues of inequality. Racial discrimination, gender inequality, LGBTQIA+ issues, and environmental injustice have continued to plague our society. We are learning about the complex intersectionality of these issues and adapting to address them together. Very rarely are issues of discrimination independent of each other.

Orange County isn't free of these issues. Cities like Santa Ana have been subject to environmental injustice. High concentrations of lead alongside roadways from the historic use of leaded gasoline affect Santa Ana residents to this day.



Learn more about the lead content of soil in Santa Ana. Visit <https://bit.ly/3U5KyVU>

Organizations like Orange County Environmental Justice (OCEJ) have brought light to these issues. Outside of Orange County, lower-income communities like Wilmington are subject to many pollutants as a result of a lack of regulations by the local government regarding the Ports of Long Beach and Los Angeles.

History of the dismissal of injustice is all too common in communities that hold less power. We must continue to acknowledge the work and impact of individuals like MLK.

(Continued on next page)

Read this *Politico Magazine* article by Sheryll Cashin regarding MLK and his radical teachings. Visit <https://politi.co/48XX7GR>

The United States honors Dr. King annually on the third Monday of January. Many of us refer to it as a day of service, but many argue it could be more! It is our choice to change the world and recognize injustices.

We remember that climate change impacts all wildlife and people around the world, but especially those that are subject to multiple systems of oppression. We encourage the continued expansion of knowledge regarding local issues and hope that our work together can help reduce injustices in our area.

T-SHIRTS STILL AVAILABLE FOR PURCHASE!



Make your selection & purchase at <https://wildlifecorridor.org/shop/>

LOCAL EVENTS

Critter Investigation: Brave Bobcats

January 24th @ 10 - 11 AM

Learn about our native feline! This fun and engaging program includes story time, an age-appropriate hike, and a themed craft. Program content is tailored for children ages 2-5, but all are welcome to attend.



**Follow the link
to register**

<https://bit.ly/47KDlGR>



Discovery Hike



January 30th @ 8:30 - 11:00 AM

Explore Aliso and Wood Canyons Wilderness Park, where you might see deer, bobcats, and hawks. Enjoy wildlife sounds, smells, and sights on this moderate 5-mile hike on rocky terrain.

Follow the link to register

<https://bit.ly/3O6NYDW>

BARBARA'S LAKE

By Laura Cohen

Just as people are disrespected, so are our native plants and animals. We use wild lands in various ways that show our lack of respect. We use them for electrical poles and wires, cell towers, dumps, roadways, trails, etc.

It is possible to make positive changes for people and wildlife. We just need to choose to invest our resources to that end.

Wet weather brings mushrooms. *Amanita villosa*, springtime amanita (Below)



Young Cooper's Hawk perched alongside Barbara's Lake Loop Trail (Right)



During the winter months, you can see hundreds of Northern shovelers on Barbara's Lake (two males, above). Northern shovelers often swim in circles to stir up the water and move organisms and plants they eat nearer to them.





IRVINE-LAGUNA WILDLIFE CORRIDOR

Connecting Habitats from Mountains to Coast

A PROJECT OF LAGUNA GREENBELT, INC.

Laguna Greenbelt, Inc. works to preserve open space and support wildlife that depend on local habitats to thrive.

Donate at:
<https://lagunagreenbelt.org/donate-2/>

Mail checks to
Laguna Greenbelt, Inc.
P.O. Box 860
Laguna Beach, CA 92652

